



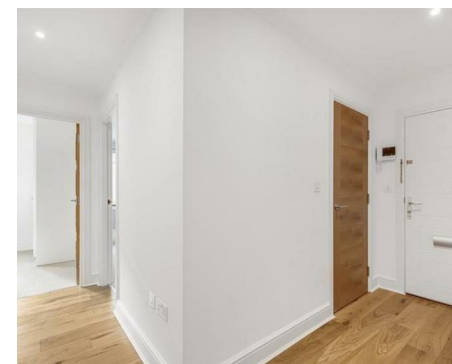
NEWINGTON
LONDON

2 Bedrooms

Apartment

Located in London

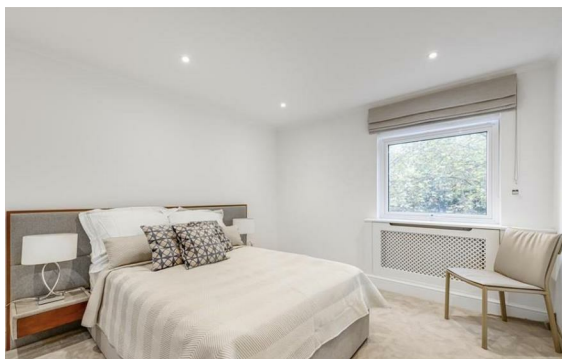
£1,050 Per Month



info@newingtonstates.com

<http://www.newingtonstates.com>

020 7724 2233



NEWINGTON LONDON

60 Upper Montagu Street

London

W1H 1SN

020 7724 2233

info@newingtonstates.com

A modern and well-presented two-bedroom apartment set within a well-maintained purpose-built building, offering bright and functional living space throughout.

The property is ideally positioned close to Regent's Park and Marylebone Underground Station, providing convenient access to local amenities, transport links and central London.

EPC rating: C

Energy Efficiency Rating: C

Agents Note: Whilst every care has been taken to prepare these particulars, they are for guidance purposes only. All measurements are approximate and are for general guidance purposes only and whilst every care has been taken to ensure their accuracy, they should not be relied upon and potential buyers/tenants are advised to recheck the measurements.

<http://www.newingtonstates.com>